

230 Joints



206 Bones



600 Muscles



Kinetec[®] CPMs Get Them All Moving

A machine for every motion



- Breva Ankle CPM
- Optima Knee CPM
- Performa Knee CPM
- Spectra Knee CPM
- Knee CPM Accessories
- Adjustable Height Trolley
- Kinetec 6080 Elbow CPM

- Kinetec 5190 Ankle CPM
- Maestra Hand and Wrist CPM
- Maestra Portable Hand CPM
- Centura Bed/Wheelchair CPM
- Centura Elbow Module CEM
- Centura Anatomical Shoulder CPM
- Centura Horizontal Abduction Module



**SAMMONS
PRESTON**
Rolyan
A Patterson Company

Bones Muscles Joints



The Spectra Knee CPM

The Kinetec Knee CPM represents the latest breakthrough in CPM technology. An unbeatable combination of good looks and mechanical innovation sets Spectra apart as the Knee CPM of choice. The entire spectrum of needs for knee patients can now be addressed with a carriage that accommodates all patients, age 8 to 80 – without any additional accessories. Lightweight and exceptionally easy to carry, Spectra offers a quick set-up and practical operational modes that enhance patient comfort, compliance and results.

Features:

- Long-life DC motor and screw-drive mechanism for years of reliable performance
- Anatomically correct alignment increases patient compliance and decreases joint stress
- Wide carriage (10 inches) accommodates the smallest children, biggest athletes; offers a complete range of treatment
- INTERNALLY contained medical grade transformer eliminates handling extra components
- Exclusive Load Reverse ensures patient protection when excess force is exerted on the joint
- Lightweight, only 24 pounds!
- Sleek design incorporates carry handles – from either side
- Includes comfortable, easy-to-apply patient pad kit
- Patient lock-out prevents accidental program changes and potential injury
- Waterproof digital hand control snaps easily into foot support
- Pause setting allows 15 minutes of rest at flexion or extension
- 24-month limited warranty ensures reliability
- UL/C-UL assures compliance to the highest standards



Technical Specifications

Range of Motion:	Hyperextension (-10 °) to full Flexion (120 °)
Weight:	24 pounds (53 kg)
Length:	37 inches (94 cm)
Full leg size:	28 to 41 inches (71 to 104 cm)
Tibia:	15 to 23 inches (38 to 58 cm)
Femur:	13 to 18 inches (33 to 46 cm)

Treatment Modes:

Warm-Up

Warm-up offers the patient a gradual progression to the pre-set full ROM.

Modulation

Modulation allows for manual setting of the ROM end-point based on patient tolerance.

ROM By Pass

Allows bypassing the pre-set ROM.

Session Time

Displays actual machine run time.

Program

Set up to 16 customized programs.



Standard Replacement Patient Pad Kit

Description

Description	Item Number
Spectra Knee CPM Machine	9293-92
Spectra Knee CPM Trolley	9293-93
Adjustable Height Trolley	5533-42
Knee CPM Bedlift III	5533-48
PediBoot Pediatric CPM Accessory	5533-49
Replacement Patient Pad Kit (Standard—18 oz. Density)	9293-99
(Deluxe—29 oz. Density)	9295-12
(Gray)	9279-37

new NEW Adjustable Height Trolley (AHT)

This versatile, adjustable-height trolley provides transport, positioning and storage for the Spectra Knee CPM. It rolls easily on 3" caster wheels, two of which lock. Attached to the trolley, Spectra will be properly positioned in a patient's bed on a secure platform. Can also be used with Optima and Performa Knee CPM's.

Bones Joints Muscles

Maestra Portable Hand CPM

The redesigned Maestra Portable Hand now incorporates a low-profile rigid splint that cuts set-up time dramatically. Compared to the single bilateral splint from the popular 8091 Portable Hand, the new design features specific left and right splints. Because each splint is specific to the left or right hand the fit and comfort level is much improved.

Your patients can enjoy the benefits of comprehensive motion therapy quickly and easily with the Kinetic Maestra Portable Hand CPM Machine. Extremely lightweight and easy to operate, the Maestra Portable Hand can be set up quickly for a wide variety of indications. Patients will appreciate its comfortable splint and non-sticky finger wraps. The anatomically shaped drive bar, lower motor mount and dorsal positioning provide versatile and comfortable patient therapy.



Kinetic Maestra Portable Hand CPM Machine

The Maestra Portable Hand CPM is lightweight and simple to operate. Without the traditional set-up of other hand CPM machines, the patient can easily and quickly receive comprehensive motion therapy for a wide variety of indications.

Clinical Benefits

- Anatomically shaped drive bar enhances abduction and adduction of the web spaces as the joints are being mobilized
- Up to 15 minutes of pause at extension and flexion limits allows for a controlled stretch and rest period
- Composite flexion, intrinsic plus and minus motion included
- Convenient digital display of angle, ROM settings, speed and force

Indications

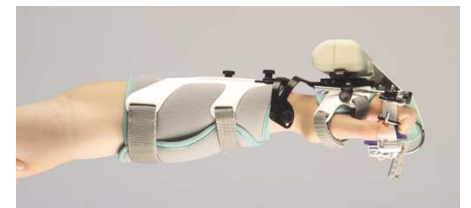
- For the treatment and prevention of intra-articular adhesions, extra-articular contractures, and excessive post-operative swelling. Indications include the following:
- open reduction and rigid internal fixation of intra-articular, diaphyseal and metaphyseal fractures of the phalanges
 - capsulotomy, arthrolysis and tenolysis for post-traumatic stiffness of MCP and PIP joints



Maestra Portable Hand CPM



Intrinsic Plus



Intrinsic Minus

Technical Specifications

Range of motion:	15° hyperextension to 270° flexion (composite fist)
Speed (5 gradations):	27 to 135 seconds (cycle of 0°–270°–0°)
Intrinsic:	Intrinsic + : 0° extension, 90° flexion Intrinsic - : 0° extension, 180° flexion

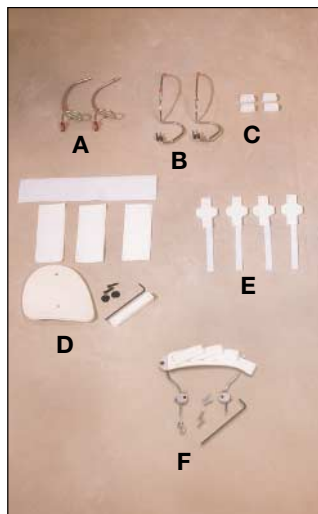
Description

Complete Maestra Portable Hand CPM Machine, including intrinsic minus and intrinsic plus accessories

Item Number

9293-95

Accessories available



CPM Hand Splint - Right

Item Number 9293-98

CPM Hand Splint - Left

Item Number 9293-97

Maestra Portable Hand

Replacement Arm Pad
Item Number 5533-19

Replacement Hand Pad
Item Number 5533-20

Straps Set—Right
Item Number 5533-33

Straps Set—Left
Item Number 5533-38

Lumbrical Bill
Item Number 5533-31

MP Blocking System
Item Number 5533-34

Drive bars

(A-Left) 5322-0053
(B-Right) 5322-0054/pkg. of 2

(C) Finger slides

5322-0050 / pkg. of 4

(D) Lumbrical bill preformed

	Left	Right
Small	5322-0043	5322-0046
Medium	5322-0044	5322-0047
Large	5322-0045	5322-0048

each

(E) Finger wraps

5322-0049 /pkg. of 4

(F) Complete MCP blocking system

5322-0060 each

Red clips (not shown)

5322-0055 /pkg. of 20

Wall transformer (not shown)

5322-0056 each

Bilateral splint

(not shown, for 8091 only)
Small 5322-0068
Large 5322-0069
each

Cover for splint

(not shown, for 8091 only)
Small 5322-0070
Large 5322-0071
each

Gloves (not shown, for 8091 only)

	Left	Right
Small	5322-0033	5322-0035
Large	5322-0034	5322-0036



Maestra Hand and Wrist CPM

Help your patients prevent post-operative joint stiffness with the Kinetec Maestra Hand and Wrist CPM Machine. Its patented drive mechanism allows continuous motion that matches the natural physiological spiral of flexion. This lightweight, easily transportable unit also features variable speed control and a pivoting palm support for increased comfort, while its easy-to-use cursors protect healing tissue by limiting range of motion.

Features

Lightweight	Transportable
On/off/reverse patient switch	Simple to operate
Numerous attachments	Allow a choice of applications
UL-listed components	Safety and reliability
Variable range of motion	Adaptable to specific therapy requirements
Natural spiral of flexion for	More natural movement; true composite fist fingers and thumb
Repetitive movement	Patient trust and compliance are increased
One machine for fingers, thumb and wrist	Reduce inventory
24-month limited warranty	Reliability ensured

Benefits



Maestra Hand CPM



Maestra Wrist CPM

Technical Specifications

Range of Motion:	Fingers: 45° hyperextension, 270° flexion (full fist)
	Thumb: Full opposition
	Wrist: 55° flexion – 90° extension 90° pronation – 90° supination
Full abduction/adduction:	Intrinsic + : 0° extension, 90° flexion
	Intrinsic - : 0° extension, 180° flexion
DIP:	0°-70°
Weight:	23 lbs. (10.5kg)

Description

Maestra Hand and Wrist CPM
Replacement Patient Pad Kit

Item Number

9293-94
5315-1909

Kinetec 6080 Elbow CPM Machine



This CPM Machine offers ultimate versatility by providing anatomically correct passive motion of the elbow joint with or without synchronized pronation/ supination of the forearm. The Kinetec 6080 rolls on locking wheels and is usable in bed or a chair. Its 135° ROM fits countless applications, and variable speed control allows progressive changes in therapy. Lockable ROM settings prevent accidental program changes and potential injuries.

Description

Kinetec 6080 Elbow CPM
Replacement Patient Pad Kit

Item Number

4621-0008-01
5315-0082

Centura Bed/Wheelchair (B/W)

Utilizing technology from the Centura Anatomical Shoulder CPM, Centura B/W is used while the patient is lying in bed or sitting in a wheelchair. Thus rehabilitation can be started earlier or when limitations of beds and wheelchairs exist. Programming through the hand control allows for the following extension/flexion movements:
Bed/Wheelchair; Arm in full extension: 0° - 110°; Elbow flexed 90°: 30° - 110°

Description

Centura B/W
Replacement Patient Pad Kit

Item Number

9293-96
5315-0130





Anatomical Shoulder CPM Machine

- Provides post-operative passive range of motion
- Prevents joint stiffness, edema, soft tissue contractures and muscle atrophy
- Patient set-up is anatomical, comfortable, and quick with a color-coded set-up system
- Programmable hand control allows pre-programming twelve different protocols
- Change for right and left is easy
- Breaks down for convenient transportation; also includes a carrying case for detachable parts

This Kinetec Centura CPM Machine is ideal for hospital and home shoulder rehabilitation.

Features

- Anatomical motionIncreases patient compliance and decrease joint stress
- Scapula plane movementProvides increased patient comfort in abduction
- Horizontal Abduction/AdductionUnique passive mode to address this critical functional motion
- Color-coded componentsEnable quick assembling/disassembling and right/left change
- Quick adjustment featuresEnable easy and quick patient set-up
- Transport handle and wheelsReduce potential injury for caregiver
- Controlled synchronized motionEnsures patient safety
- Hand control limited accessIf needed, allows the patient to change only the ROM limits
- Patient lock-out switchPrevents accidental program change and potential patient injury
- Program mode featureAbility to pre-program twelve protocols
- Built-in hour meterDiscreetly monitors patient's compliance
- Manual set-up modeFlexibility to set-up according to patient's tolerances
- Adjustable speed5 speeds available for precise therapy options
- Adjustable forceEasy-to-set safety feature; machine reverses when excess force is exerted on the joint
- Programmable pauseIncreases efficiency of therapy by prolonging stretch to muscle group
- 24-month limited warrantyReliability ensured

Benefits



Technical Specifications

Passive Range of Motion:

- Flexion 180° Extension 20°
- Abduction 160° Adduction 20°
- External Rotation 90° Internal Rotation 60°
- Horizontal Abduction -30° to 110°

Synchronized Abduction and Rotation:

- Abduction 160° Adduction 20°
- External Rotation 90° Internal Rotation 30°

Patient Height: from 4'2" to 6'6"
(1.3 – 2m) tall

Speed: 5 speeds from 30°/minute to 120°/minute

Unit Weight: 50 lb. (23kg)

Dimensions: length, 27" (70cm)
width, 27" (71cm)
height, 35" (90cm)



Centura Elbow Module (CEM)

Enhances the versatility of the Centura Shoulder CPM. This easy-to-use module provides anatomically correct elbow extension/ flexion in an abducted position with your Centura Shoulder CPM. Change-over from an existing shoulder pattern is quick and easy; no tools required. CEM features our deluxe hand control, offering the same operational layout as Centura Shoulder, Spectra Knee, Maestra Hand & Wrist and the new Brevia Ankle CPM. For use with Series 2 and later Centura Shoulder CPMs. Extension 10°. Flexion 135°. Extension with fixed, adjustable Pronation/Supination in an abducted, rotated plane. Pad kit not included.



Description

- Centura Shoulder CPM Machine
- Includes patient pad kit, carry case, reusable chair cover
- Centura Elbow Module (CEM)
- Centura Horizontal Abduction Module
- Centura Patient Pad Kit
- Centura Disposable Chair Cover
- Centura Reusable Chair Cover

Item Number

- 4621-0031-01
- 5533-35
- 5533-32
- 5315-0130
- 5315-0136
- 5315-0135

Other CPM Applications



Kinetec Performa Knee Machine (left)

State-of-the-art in anatomical knee rehabilitation equipment. UL-approved computerized hand control is completely waterproof. Built-in pediatric capability provides cost savings.

Description

Kinetec Performa Knee Machine

Item Number

4621-0018-01

Technical Specifications

Range of Motion:	Knee: -3° to 130°	Sizing:	
Weight:	33 lbs. (15kg)	Adult	Pediatric
Length:	42½" (107cm)	Femur: 10-20" (25-50cm)	9¾" (25cm)
Width:	13" (33cm)	Tibia: 11-23" (28-58cm)	11¾" (30cm)
		Total: 21-43" (53-109cm)	21¾" (55cm)

Kinetec Optima Knee Machine (right)

Designed for a wide variety of CPM knee rehabilitation applications, Optima offers myriad features. A patient lockout switch prevents accidental program changes and potential injuries.

Description

Kinetec Optima Knee Machine

Item Number

4621-0016-01

Technical Specifications

Range of Motion:	Knee: -5° to 115°	Sizing:	
	Ankle: Adjusts for 40° plantar flexion	Adult	Pediatric
	30° dorsi flexion,	Femur: 13-18" (33-46cm)	8¾-13" (21-33cm)
	30° internal/external rotation	Tibia: 15-22" (38-56cm)	10¾-14½" (27-37cm)
Weight:	29 lbs. (13kg)	Total: 28-40" (71-102cm)	18¾-27¾" (48-70cm)
Length:	39" (99cm)		
Width:	13" (33cm)		



Knee CPM Accessories

Description

Replacement Patient Pad Kit-Standard (19 oz. density)

Replacement Patient Pad Kit-Deluxe (28 oz. density)

Replacement Patient Pad Kit-Gray

New! Adjustable Height Trolley

CPM Bedlift III

Item Number

9293-99

9295-12

9279-37

*5533-42

*5533-48

new **NEW**

Adjustable Height Trolley (AHT)

Item# 5533-48.

See Page 1 or call for further details.



The Brevia Ankle Machine

The Brevia Ankle CPM

An attractively designed and priced ankle CPM that provides anatomically correct motion in two planes. Brevia offers Plantar flexion, Dorsiflexion and Inversion, Eversion patterns. Set-up and change-over between the two movement patterns is quick and easy; no tools required. Designed for use in a chair or bed. This quiet, extremely stable CPM features our deluxe hand control. Pad kit purchased separately.

The Brevia Ankle CPM Specifications:

Plantar flexion	40°
Dorsiflexion	30°
Inversion	25°
Eversion	25°

Description

Brevia Ankle CPM

Patient Pad Kit

Item Number

5533-36

5533-43



Kinetec 5190 Ankle CPM Machine

Kinetec 5190 Ankle CPM Machine

Makes treatment of ankle trauma easier than ever! Its three-axis design and adjustable supports provide anatomically correct motion to ankle and subtalar joint, while the tilting base, variable speed settings and hand-held controller enhance patient comfort. Designed for use in a chair or bed, this versatile machine is quiet, easy to use and extremely stable.

Description

Kinetec 5190 Ankle CPM

Replacement Patient Pad Kit

Item Number

4621-0049-01

5315-0107



4 Sammons Court
Bolingbrook, IL 60440-4989
630.226.1300
630.226.1389 fax

©2005 AbilityOne Corporation
All rights reserved. Printed in USA. 3540LIT

Available from your local Sammons Preston Rolyan
Distributor or call Sammons Preston Rolyan
at 1-800-228-3693. In Canada at 1-800-665-9200